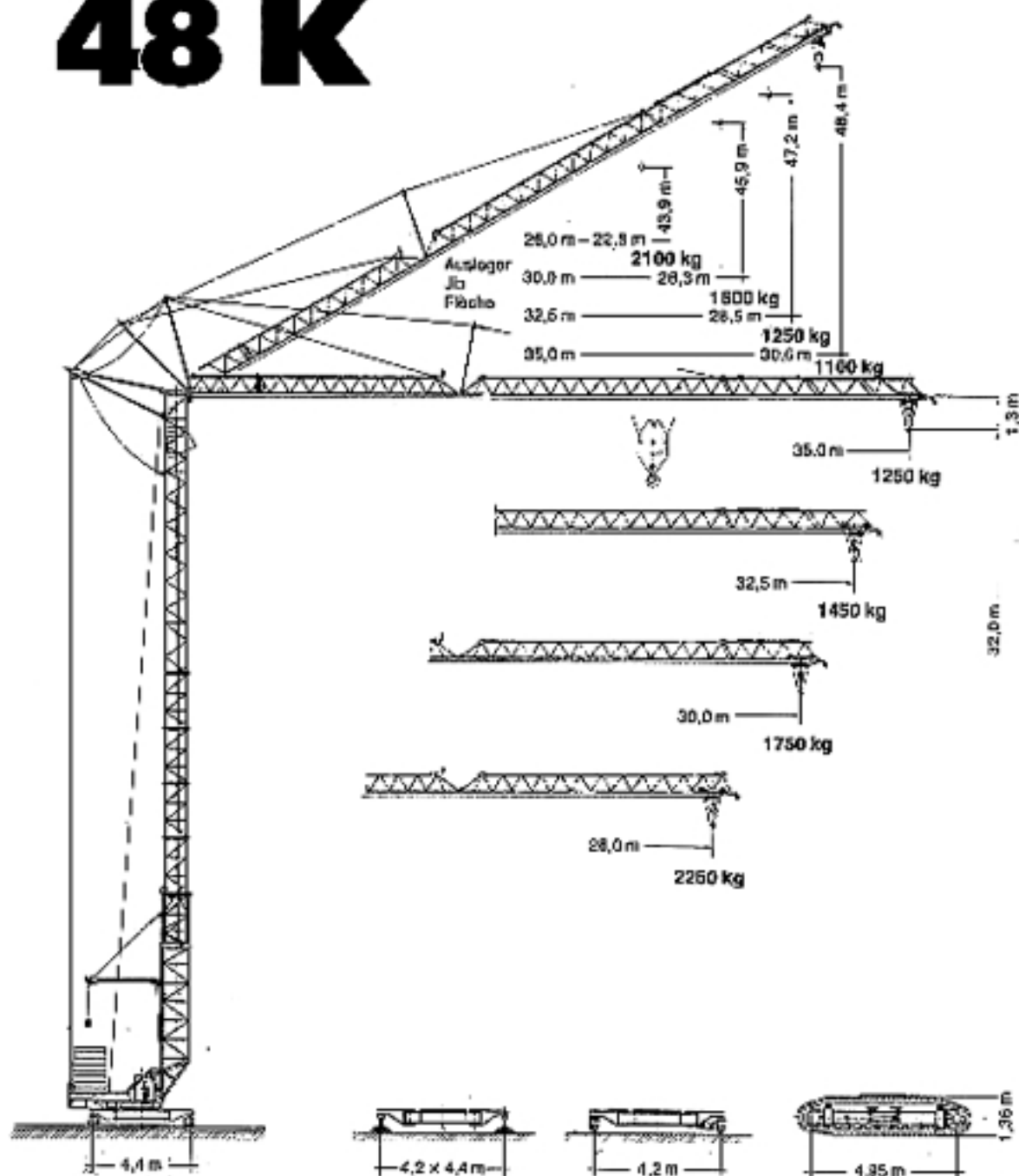


**Tower Crane
Grue à tour**

Turmdrehkran 48 K



LIEBHERR

Ausladung und Traglast

Radius and capacity

Portée et charge




Auslegerlänge Length of jib Longueur de flèche	Max. Traglast Max. capacity Charge max.	m ft	Ausladung und Traglast Radius and capacity Portée et charge						
			22,0 72.2	24,0 78.7	26,0 85.3	28,0 91.8	30,0 98.4	32,5 106.6	35,0 114.0
35,0 m / 114,0 ft	3,2 – 20,5 m 10,5 – 67,2 ft 2400 kg / 5290 lbs	kg lbs	2185 4820	1970 4340	1790 3940	1635 3610	1505 3320	1365 3010	1250 2750
32,5 m / 106,6 ft	3,2 – 21,5 m 10,5 – 70,5 ft 2400 kg / 5290 lbs	kg lbs	2310 5090	2090 4590	1890 4170	1730 3810	1595 3520	1450 3200	
30,0 m / 98,4 ft	3,2 – 23,1 m 10,5 – 75,0 ft 2400 kg / 5290 lbs	kg lbs	2400 5290	2260 5030	2075 4580	1920 4190	1750 3860		
26,0 m / 85,3 ft	3,2 – 24,8 m 10,5 – 81,5 ft 2400 kg / 5290 lbs	kg lbs	2400 5290	2400 5290	2250 4960				


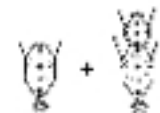
Auslegerlänge Length of jib Longueur de flèche	Max. Traglast Max. capacity Charge max.	m ft	Ausladung und Traglast Radius and capacity Portée et charge										
			14,0 46.0	16,0 52.5	18,0 59.0	20,0 65.6	22,0 72.2	24,0 78.7	26,0 85.3	28,0 91.8	30,0 98.4	32,5 106.6	35,0 114.0
35,0 m / 114,0 ft	3,2 – 11,95 m 10,5 – 39,2 ft 4500 kg / 9920 lbs	kg lbs	3670 8090	3080 6790	2850 6340	2310 5090	2040 4500	1825 4020	1645 3630	1490 3290	1360 3000	1215 2680	1100 2430
32,5 m / 106,6 ft	3,2 – 12,15 m 10,5 – 40,0 ft 4500 kg / 9920 lbs	kg lbs	3875 8540	3260 7200	2905 6190	2460 5400	2170 4780	1940 4260	1745 3850	1585 3500	1445 3160	1300 2870	
30,0 m / 98,4 ft	3,2 – 13,35 m 10,5 – 43,8 ft 4500 kg / 9920 lbs	kg lbs	4240 9350	3670 7870	3075 6780	2690 5900	2380 5260	2130 4700	1825 4240	1760 3860	1600 3520		
26,0 m / 85,3 ft	3,2 – 14,2 m 10,5 – 46,6 ft 4500 kg / 9920 lbs	kg lbs	4500 9920	3670 8100	3340 7360	2920 6440	2590 5710	2320 5120	2100 4630				

Geschwindigkeiten

Speeds

Vitesse

	U/min 0,15 – 0,85 st./min ft./min	4,0 kW / 5,4 HP
	12,0 / 40,0 m/min 32,0 / 326,0 ft/min	3,0 kW / 4,0 HP
	50,0 m/min 98,4 ft/min	2 x 2,2 kW / 2 x 3,0 HP

Hubwerk Hoist gear Mécanisme de levage	Gang Gear Boîte	kg	m/min	lbs	ft/min
	1	2400	6,9	5290	22,0
	2	2400	27,5	5290	90,2
	3	1360	55,0	2090	180,0
	1	2250	6,9	4900	22,0
		4500	3,4	9920	11,2
	2	2250	27,5	4900	90,2
		4500	13,5	9920	44,0
	3	1125	55,0	2480	180,0
		2250	27,5	4900	88,8

Kabelquerschnitt bei 380 V
Cross section of cable 380 V
Section de câble à 380 V

Betriebsspannung
Operating voltage
Tension de service

bis 20 m
up to 65 ft
jusqu'à 20 m

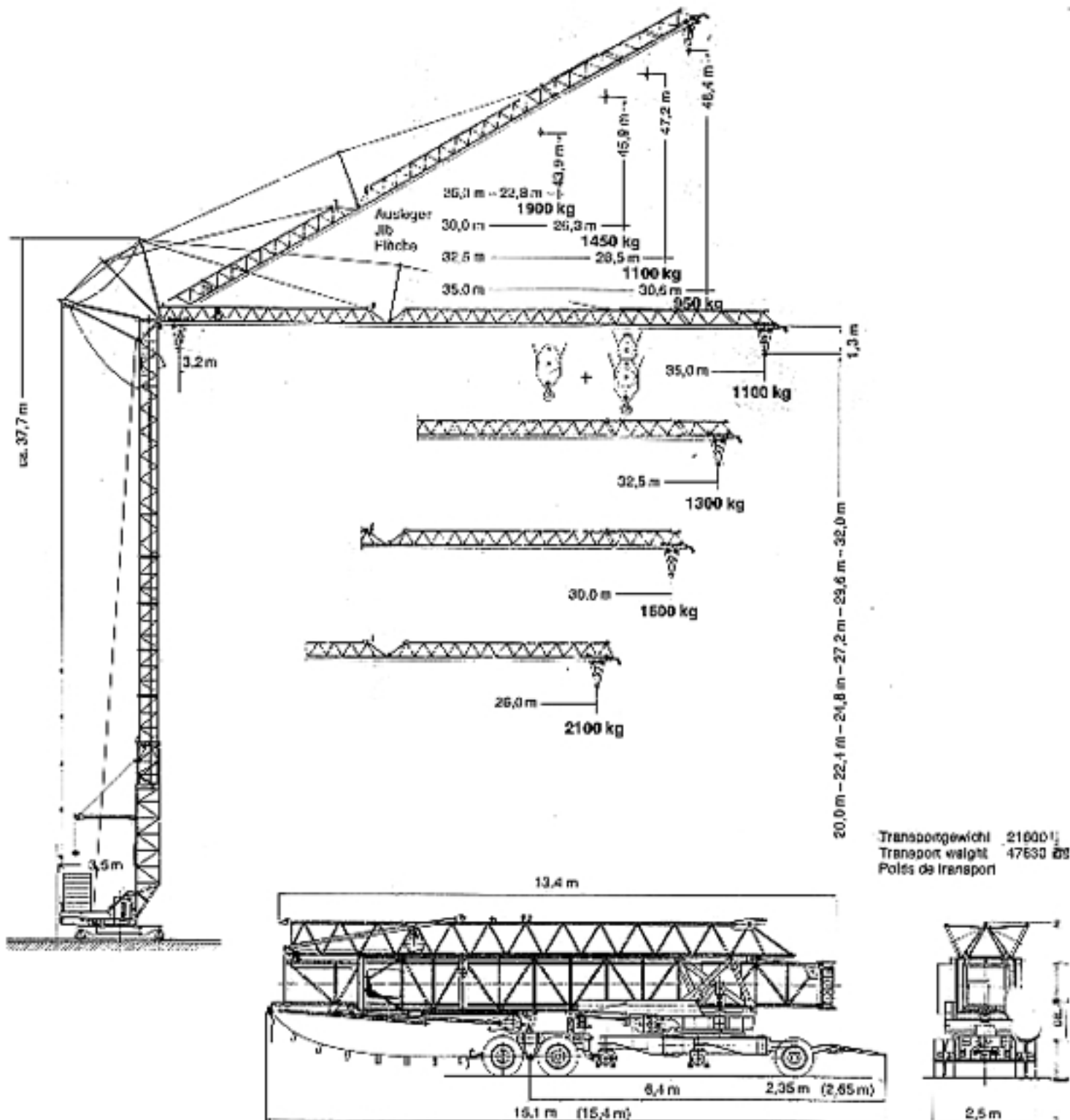
Frequenz
Frequency
Fréquence

bis 20 m
up to 92 ft
jusqu'à 20 m

Gesamtmotorleistung
Total motor output
Puissance totale des moteurs

Technische Daten - Technical data

Caractéristiques techniques



Gewicht Weight Poids

Max. Ecklast in Betrieb	28000 kg
Max. corner pressure in operation	81740 lbs
Réaction max. par angle en service	
Max. Ecklast außer Betrieb	26500 kg
Max. corner pressure out of operation	56430 lbs
Réaction max. par angle hors service	

Gegengewicht ca.	25020 kg
Counter weight approx.	55170 lbs
Contrepoids env.	
Konstruktionsgewicht	23050 kg
Dead weight	44200 lbs
Poids de la construction	

48 K